

**[MITSUBISHI]**

MODEL	CHASSIS CODE	YEAR	ACCESSORY	PRODUCT NO.	NOTE
I	HA1W	Jan.2006-	SRS	817	
OUTLANDER	CW5W	Oct.2005-Sep.2007	SRS	817	
	CW6W	Oct.2007-	SRS	818	Note*.8
RVR SPORTS GEAR	N21/23	Mar.1991-Oct.1997		803	
			ACC	811	
	SRS	817	Note1		
	60/70	Nov.1997-	SRS	817	Note1
ek WAGON SPORTS ACTIVE CLASSY	H81/H82	Oct.2001-	SRS	817	Note6
			SRS	820	Note6
AIRTREK	CU	Jun.2001-	SRS	820	Note6
ECLIPSE	D22/27	Jan.1990-Jun.1995		806	Note5
			SRS	817	Note1
	D32	Jul.1995-	ACC/SRS	813	
FTO	DE3/2A	Oct.1994-		814	
			SRS	817	Note1
GALANT ETERNA EMERAUDE LEGNUM CARISMA SAVA VIENTO		1970-1988		801	Note5
	E32-39	1989-Apr.1992	Telescopic	805	
				806	Note5
	E50-80	May.1992-Aug.1996		814	
			Radio Control Button	812	
			ACC	811	
	EA/EC	Sep.1996-	SRS	817	Note1
ACC/SRS			813		
CALANT FORTIS	CY4A	Aug.2007-	SRS	818	Note*
GRANDIS	NA4W	May.2003-	SRS	818	
CORDIA TREDIA	A212	1982-1987		801	Note5
COLD Version R COLD PLUS	Z20	Nov.2002-	SRS	817	Note6
CHARIOT GRANDIS	DO	1983-Sep.1991		801	Note5
	33-64	Oct.1991-		803	
			ACC	811	
	SRS	817	Note1		
80/90	Oct.1997-Apr.2003	SRS	817	Note1	
GTO	Z15/16	Oct.1990-	SRS	817	
			ACC/SRS	813	
JEEP	J26~59	1976-		807	Note4

\*Note: Regardless of the make and model of the vehicle, there are cases that compatible product number is different among the same model with the same year, because of the variation of the factory parts. Before installing this product, please compare the back of your steering wheel and the configuration of the boss kit, and see if they fit. Also, for the air bag indicator, some of the vehicles cannot be lighted off, or even if it could, it may light on later.

**[MITSUBISHI]**

MODEL	CHASSIS CODE	YEAR	ACCESSORY	PRODUCT NO.	NOTE	
STARION	A183	1982-Dec.1989		801	Note5	
STRADA	K34	Oct.1994-May.1997		803		
	K74	Jun.1997-	SRS	817	Note1	
TOWN BOX	U61/62W	Jun.1999-		815		
TOWN BOX WIDE	U65/66W		SRS	817	Note1	
CHANLENGER	RXF	Jul.1996-	SRS	817	Note1	
DIAMANTE LAMBDA SIGMA	A133	1976-1983		801	Note5	
	F11-27	May.1990-Dec.1994		806	Note5	
			Radio Control Button	812		
			ACC	811		
	F31-47	Jan.1995-		814		
			SRS	817	Note1	
ACC/SRS	813					
DIAMANTE WAGON	K40	Jun.1990-Jun.1997	Radio Control Button	812		
			ACC	811		
	F30	Oct.1997-	SRS	TBD		
DION	CR	Jan.2000-	SRS	820	Note6	
DEBONAIR	S11/12	1986-Sep.1992		FINISHED		
	S22-27	Oct.1992		FINISHED		
DELICA STAR WAGON	L0	1979-1986		800		
	P23	1986-Aug.1987		802		
	P35	Sep.1987-		803		
		May.1994-	SRS	817	Note1	
DELICA SPACE GEAR	PA-PF	May.1994-		803		
			SRS	817	Note1	
			ACC/SRS	813		
DELICA D: 5	CV5W	Jan.2007-	SRS	818	Note*	
TRITON	KB9T	Aug.2006-	SRS	TBD		
PAJERO	L0	1979-1987		800		
	LI	1987-1988		802		
	L140	1988-Jan.1991		801	Note5	
				806	Note5	
	V20/40	Jan.1991-May.1997		803		
			SRS	817	Note1	
			Jun.1997-	SRS	817	Note1
				ACC/SRS	813	
V60/70	Sep.1999-Sep.2006	SRS	820	Note6		
V80/90	Oct.2006-	SRS	TBD			
PAJERO io	H60	Jun.1998-	SRS	820	Note6	

\*Note: Regardless of the make and model of the vehicle, there are cases that compatible product number is different among the same model with the same year, because of the variation of the factory parts. Before installing this product, please compare the back of your steering wheel and the configuration of the boss kit, and see if they fit. Also, for the air bag indicator, some of the vehicles cannot be lighted off, or even if it could, it may light on later.

**[MITSUBISHI]**

MODEL	CHASSIS CODE	YEAR	ACCESSORY	PRODUCT NO.	NOTE
PAJERO Jr.	H57	Nov.1995-	SRS	816	Note2
			SRS	817	Note3
PAJERO mini	H50	Jan.1995-Sep.1998		810	
			SRS	816	Note2
			SRS	817	Note3
		Oct.1998-	SRS	817	Note3
PROUDIA	S32A	Dec.1999-	SRS	TBD	
MINICA MINICAB	H10	-Jan.1989		FINISHED	
	H20/30/U40	Feb.1989-Sep.1993		810	
	H30/U40	Oct.1993-Oct.1998		810	
			SRS	816	Note2
	H40/U60	Oct.1998-		815	
			SRS	817	Note3
MINICATOPPO BRAVO TOPPO BJ	H30/40	Oct.1993-		810	
			SRS	816	Note2
			SRS	817	Note3
	H40	Oct.1998-		815	
SRS			817	Note3	
TOPPO BJ WIDE	H40	Jan.1999-		815	
			SRS	817	Note3
MIRAGE LANCER FIORE ASTI EVO	C51-83	Feb.1988-Sep.1991	Telescopic	805	
				806	
	CB/CE EVO2.3	Oct.1991-Sep.1995		803	
			ACC	811	
	CJ/CL/CK CE/CN/CP EVO3-6	Oct.1995-		815	
			SRS	817	Note1
	EVO7-9 WAGON	Feb.2001-	SRS	817	Note6
SRS			820	Note6	
EVO10	Oct.2007-	SRS	818	Note7.8	
MIRAGE DINGO	CQ	Dec.1998-	SRS	820	Note6
LANCER CEDIA WAGON	CS	May.2000-	SRS	817	Note6
			SRS	820	Note6
LIBERO	CB/CD	May.1992-Aug.1995	Pre-facelift model	803	
		Sep.1995-	Post-facelift model	815	
			ACC	811	
			SRS	817	Note1

\*Note: Regardless of the make and model of the vehicle, there are cases that compatible product number is different among the same model with the same year, because of the variation of the factory parts. Before installing this product, please compare the back of your steering wheel and the configuration of the boss kit, and see if they fit. Also, for the air bag indicator, some of the vehicles cannot be lighted off, or even if it could, it may light on later.

## [MITSUBISHI]

Regardless of the make and model of the vehicle, there are cases that compatible product number is different among the same model with the same year, because of the variation of the factory parts. Before installing this product, please compare the back of your steering wheel and the configuration of the boss kit, and see if they fit. Also, for the air bag indicator, some of the vehicles cannot be lighted off, or even if it could, it may light on later.

•We strongly recommend requesting the installation to professionals.

- Note\* The compatibility is for the vehicle made before April 2009. Please inquiry us for vehicles made after April 2009.
- Note1 If the horn wiring is connected to the SRS without using bullet terminal, please stop the installation or process the horn wirings.
- Note2 SRS indicator on the SRS.
- Note3 SRS indicator on the meter.
- Note4 The boss kit cannot be installed on the steering wheel covered with pad. (Figure 8-1)
- Note5 The configuration of the installation side for #801 and #806 is identical. Please choose an appropriate one depending on the length. (Figure 8-2)
- Note6 The fixed way of the factory steering is different. Please confirm the bolt shape in the access hole. (Figure 8-3)  
The airbag module is fixed by the trox bolt from the right and left of the factory steering = #817  
The steering is fixed by the hexa bolt from the left side of the factory steering = #820
- Note7 To continue using the ACD function, an optional kit is necessary to relocate the ACD select switch to the center console. (Please buy the kit at the dealership.)  
8610A019(switch)x1 8011A267(panel)x1 8050A018(plug)x2
- Note8 Optional Boss Spacer is necessary, please select one from 10, 15, 20, 25 or 30mm.
- Note9 Additional U-Turn Harness is necessary for the dual airbag.

### Equipment Explanation

ACC	Automatic Cruise Control
ACD	Active Center Differential
SST	Two-clutch Sports shift Transmission (AT with paddle shift)
SRS	Air bag

\*Note: Regardless of the make and model of the vehicle, there are cases that compatible product number is different among the same model with the same year, because of the variation of the factory parts. Before installing this product, please compare the back of your steering wheel and the configuration of the boss kit, and see if they fit. Also, for the air bag indicator, some of the vehicles cannot be lighted off, or even if it could, it may light on later.

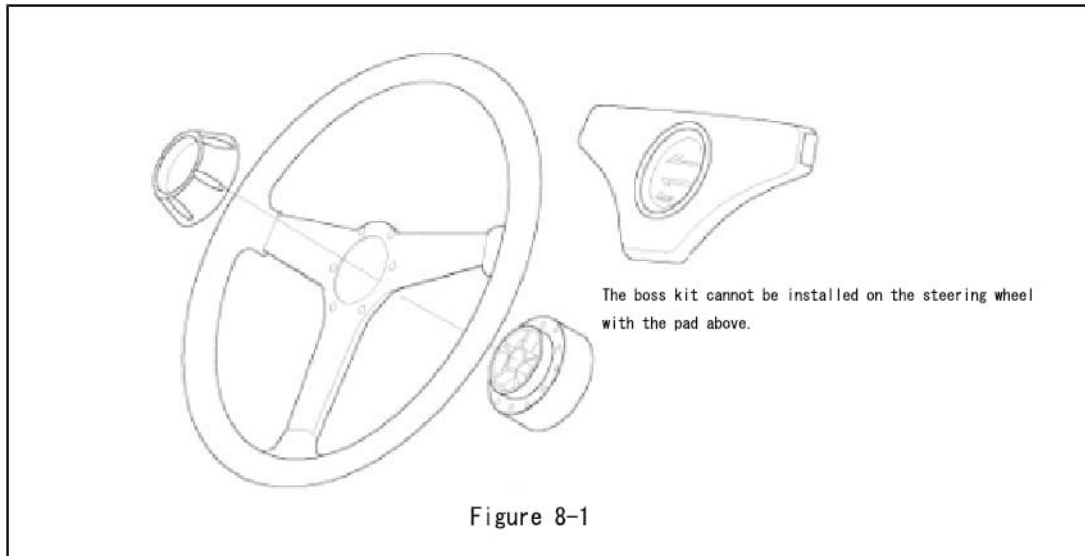


Figure 8-1

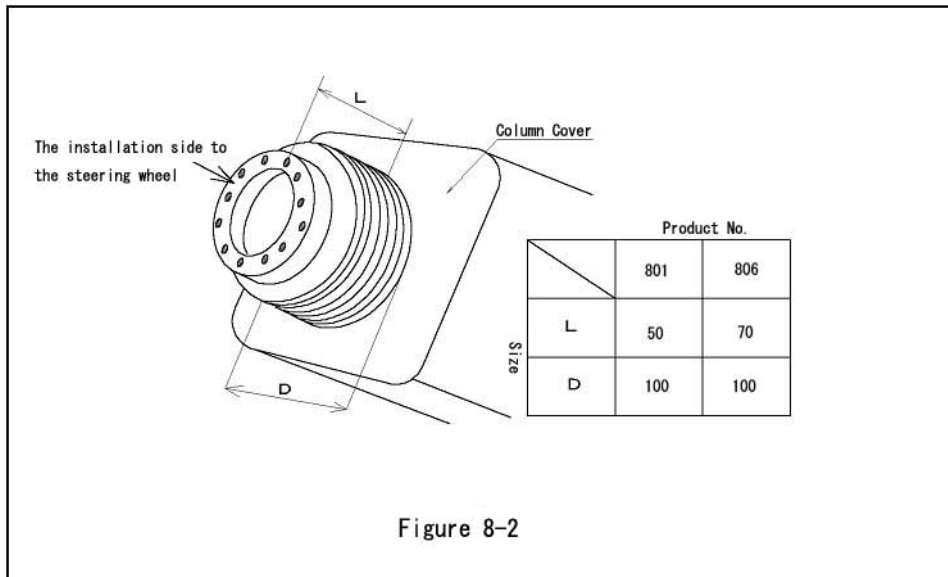


Figure 8-2

\*Note: Regardless of the make and model of the vehicle, there are cases that compatible product number is different among the same model with the same year, because of the variation of the factory parts. Before installing this product, please compare the back of your steering wheel and the configuration of the boss kit, and see if they fit. Also, for the air bag indicator, some of the vehicles cannot be lighted off, or even if it could, it may light on later.

[**MITSUBISHI**]

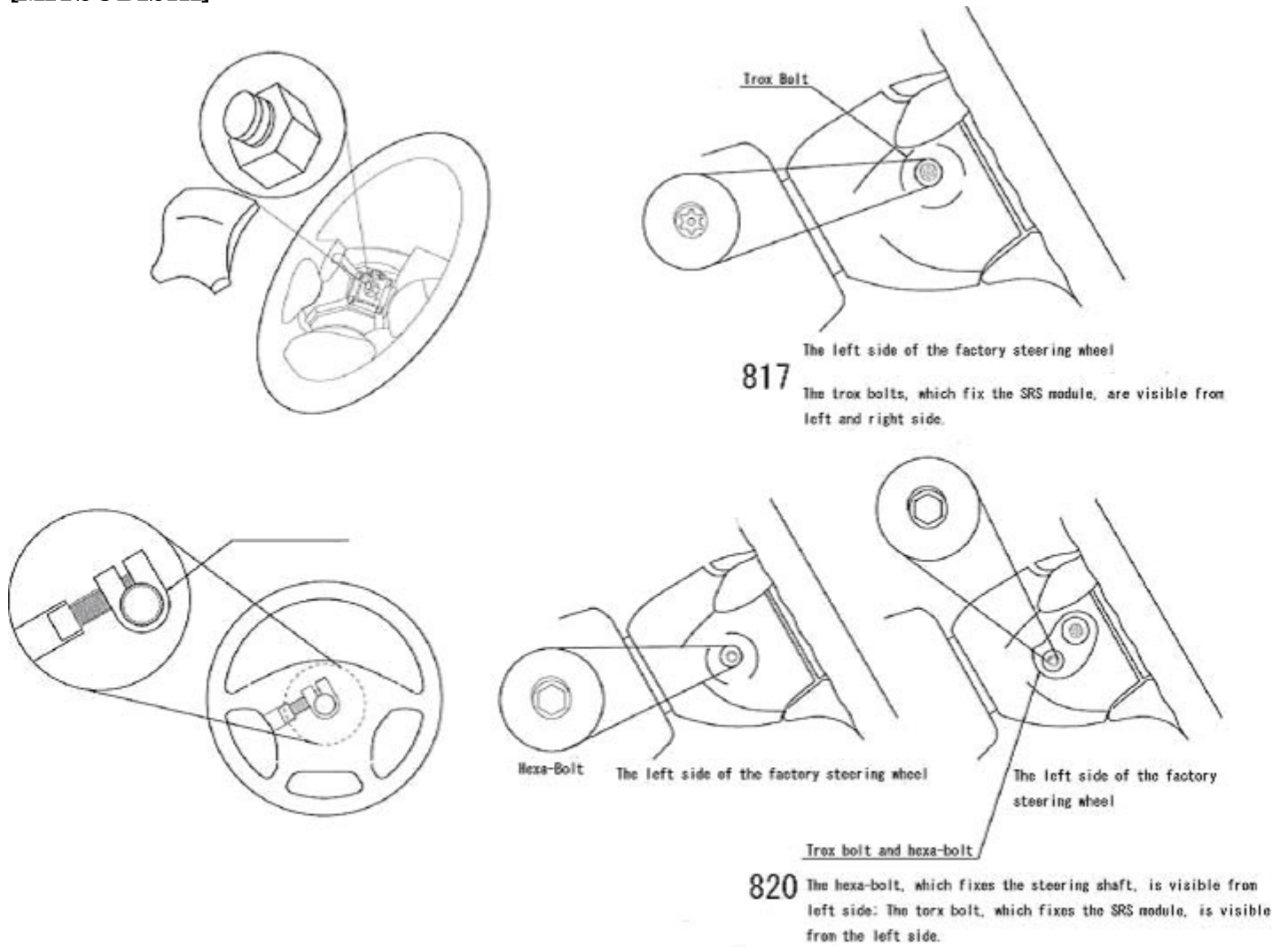


Figure 8-3

\*Note: Regardless of the make and model of the vehicle, there are cases that compatible product number is different among the same model with the same year, because of the variation of the factory parts. Before installing this product, please compare the back of your steering wheel and the configuration of the boss kit, and see if they fit. Also, for the air bag indicator, some of the vehicles cannot be lighted off, or even if it could, it may light on later.